

SPEC SHEET + MEASUREMENTS



Alternative Colorblock Rocky Eco™ -Fleece Zip Hoodie. AA32023

Product photo



A more athletic-inspired take on our standard Rocky, the colorblocking provides a little extra styling detail.

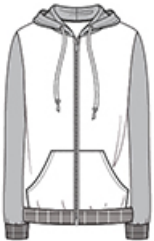
- 6.49-ounce, 50/46/4 poly/cotton/rayon
- 50% polyester(6.25% recycled), 46% cotton(6.25% organic), 4% rayon
- Slim fit
- Hoodie with natural drawcords
- Set-in sleeves
- Split kangaroo pocket
- Ribbed sleeve cuffs and hem

*Eco-Fleece fabric infuses each garment with unique character.
Please allow for slight color variations.*

CARE INSTRUCTIONS

Machine wash cold. Tumble dry low.

Sketches



front



back

SPEC SHEET + MEASUREMENTS



Alternative Colorblock Rocky Eco™-Fleece Zip Hoodie. AA32023

PRODUCT MEASUREMENTS

	XS	S	M	L	XL	2XL	3XL
Chest	16 1/2	18	19 1/2	21	22 14/2	24	25 1/2
Body Length at Front	26	27	28	29	30	31	32
Set in Sleeve Length	25 3/4	26 3/8	27	27 5/8	28 1/4	28 7/8	29 1/4

Chest: Measured across the chest one inch below armhole when laid flat.

Body Length at Front: Measure from high point shoulder to lowest point of hem at front.

Set in Sleeve Length: Measure from Center Back neck to shoulder point to sleeve hem.

SIZE CHARTS

	XS	S	M	L	XL	2XL	3XL
Chest	32-34	35-37	38-40	41-43	44-46	47-48	49-50

SPEC SHEET + MEASUREMENTS



Alternative Colorblock Rocky Eco™-Fleece Zip Hoodie.
AA32023

HOW TO MEASURE



CHEST

Measure under the arm and around the fullest part of the chest with arms down, keeping tape horizontal.