

## SPEC SHEET + MEASUREMENTS

**DIST  
RICT®**

District® Perfect Tri® French Terry Full-Zip Hoodie.

DT356

### Product photo



A hoodie that is perfect for layering all year round.

- 8.3-ounce, 61/31/8 ring spun cotton/poly/rayon French terry
- Tear-away label
- Unlined hood
- Natural drawcords, back neck tape and zipper tape
- YKK Metaluxe® zipper
- Front pockets
- 1x1 rib knit cuffs and hem

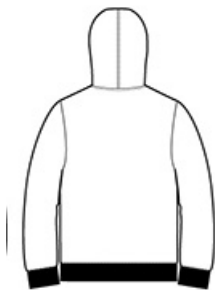
### CARE INSTRUCTIONS

Machine wash cold with like colors, only non-chlorine bleach when needed, tumble dry low, warm iron if necessary.

### Sketches



front



back

# SPEC SHEET + MEASUREMENTS



District® Perfect Tri® French Terry Full-Zip Hoodie.  
DT356

## PRODUCT MEASUREMENTS

	XS	S	M	L	XL	2XL	3XL	4XL
Body Length at Front	26 1/2	27 1/2	28 1/2	29 1/2	30 1/2	31 1/2	32	32 1/2
Chest	18 1/2	20	21 1/2	23	24 1/2	26	28	30
Sleeve Length	34 1/4	35	35 3/4	36 1/2	37 1/4	38	38 3/4	39 1/2

**Body Length at Front:** Measure from high point shoulder to lowest point of hem at front.

**Chest:** Measured across the chest one inch below armhole when laid flat.

**Sleeve Length:** Start at center of neck and measure down shoulder, down sleeve to hem.

## SIZE CHARTS

	XS	S	M	L	XL	2XL	3XL	4XL
Chest	32-34	35-37	38-40	41-43	44-46	47-49	50-53	54-57

## HOW TO MEASURE



### CHEST

Measure under the arm and around the fullest part of the chest with arms down, keeping tape horizontal.