

# SPEC SHEET + MEASUREMENTS

PORT AUTHORITY.

## Port Authority® Women's Active Colorblock Soft Shell Jacket. L718

### Product photo



When it's time to get active, this soft shell won't back down. With modern colorblocking on the collar, shoulders and sleeves, this budget-friendly jacket performs with wind- and water-resistance and easy-moving stretch.

- 100% polyester knit shell bonded to a water-resistant film insert and a 100% polyester mesh interior
- 1000MM fabric waterproof rating
- 1000G/M<sup>2</sup> fabric breathability rating
- Full-length interior storm flap with chin guard
- Reverse coil center front zipper
- Front zippered pockets
- Elastic binding at cuffs
- Open hem with adjustable locking drawcord

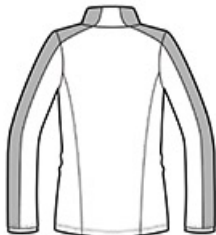
### CARE INSTRUCTIONS

Machine wash cold. Gentle cycle. Tumble dry low. Cool iron if needed. Do not bleach. Do not dry clean.

### Sketches



front



back

# SPEC SHEET + MEASUREMENTS

PORT AUTHORITY

## Port Authority® Women's Active Colorblock Soft Shell Jacket. L718

### PRODUCT MEASUREMENTS

	XS	S	M	L	XL	XXL	3XL	4XL
Size	2	4/6	8/10	12/14	16/18	20/22	24/26	28/30
Bust	18 1/4	19 1/4	20 1/4	21 3/4	23 1/4	24 3/4	26 3/4	28 3/4
Body Length at Back	26 1/2	27	27 1/2	28	28 1/2	29	29 1/2	30
Sleeve Length from Center Back	32	32 1/2	33	33 5/8	34 1/4	34 7/8	35 1/4	35 5/8

**Bust:** Measured across the chest one inch below armhole when laid flat.

**Body Length at Back:** Measured from high point shoulder to finished hem at back.

**Sleeve Length from Center Back:** Measure from Center Back neck to shoulder point to sleeve hem.

### SIZE CHARTS

	XS	S	M	L	XL	XXL	3XL	4XL
Size	2	4/6	8/10	12/14	16/18	20/22	24/26	28/30
Bust	32-34	35-36	37-38	39-41	42-44	45-47	48-51	52-55

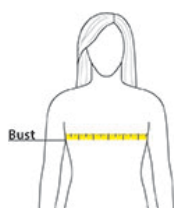
# SPEC SHEET + MEASUREMENTS

PORT AUTHORITY

Port Authority® Women's Active Colorblock Soft Shell  
Jacket. L718

## HOW TO MEASURE

---



### BUST

Measure under the arm and  
around the fullest part of the bust  
with arms down, keeping tape  
horizontal.