

SPEC SHEET + MEASUREMENTS

SPORT-TEK

Sport-Tek® Women's Tech Fleece Colorblock Full-Zip Hooded Jacket. LST245

Product photo



Snag-resistant with a matte finish and contrast color detailing throughout, this double-knit jacket is right on trend with moisture-wicking performance.

- 7.1-ounce, 100% polyester
- Three-panel hood with drawcord and toggles
- Contrast neck and hood taping
- Contrast reverse coil zippered media pocket with headphone exit port
- Headphone holding loops at neck
- Reverse coil zipper
- Princess seams with integrated front pockets
- Elongated rib knit cuffs and hem
- Thumbholes to keep hands warm

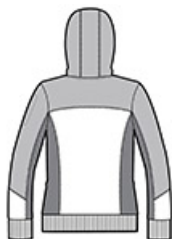
CARE INSTRUCTIONS

Machine wash cold with like colors. Do not use softener. Remove promptly. Do not bleach. Tumble dry low. Cool iron if necessary.

Sketches



front



back

SPEC SHEET + MEASUREMENTS



Sport-Tek® Women's Tech Fleece Colorblock Full-Zip Hooded Jacket. LST245

PRODUCT MEASUREMENTS

	XS	S	M	L	XL	XXL	3XL	4XL
Size	2	4/6	8/10	12/14	16/18	20/22	24/26	28/30
Bust	18 1/2	19 1/2	20 1/2	22	23 1/2	25	27	29
Body Length at Back	26	26 1/2	27	27 1/2	28	28 1/2	29	29 1/2
Sleeve Length from Center Back	33	33 1/2	34	34 5/8	35 1/4	35 7/8	36 1/4	36 5/8

Bust: Measured across the chest one inch below armhole when laid flat.

Body Length at Back: Measured from high point shoulder to finished hem at back.

Sleeve Length from Center Back: Measure from Center Back neck to shoulder point to sleeve hem.

SIZE CHARTS

	XS	S	M	L	XL	XXL	3XL	4XL
Size	2	4/6	8/10	12/14	16/18	20/22	24/26	28/30
Bust	32-34	35-36	37-38	39-41	42-44	45-47	48-51	52-55

SPEC SHEET + MEASUREMENTS



Sport-Tek® Women's Tech Fleece Colorblock Full-Zip
Hooded Jacket. LST245

HOW TO MEASURE



BUST

Measure under the arm and
around the fullest part of the bust
with arms down, keeping tape
horizontal.