

## SPEC SHEET + MEASUREMENTS

**SPORT-TEK**

### Sport-Tek® Ladies Rival Tech Fleece Full-Zip Hooded Jacket. LST295

#### Product photo



A welded mesh texture joins solid tech fleece for a state-of-the-art look that also performs with moisture wicking and snag resistance.

- 100% polyester debossed mesh texture
- 7.1-ounce, 100% polyester double-knit sleeves and hood
- Three-panel hood with drawcords and toggles
- Taped neck
- Headphone holding loops at neck
- Front and back princess seams
- Elongated cuffs and hem
- Raglan sleeves
- Reverse coil zipper with reflective zipper pull
- Side pockets
- Self-fabric cuffs and hem

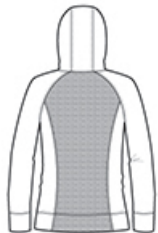
#### CARE INSTRUCTIONS

Machine wash cold with like colors. Non-chlorine bleach when needed. Cool iron if needed

#### Sketches



front



back

# SPEC SHEET + MEASUREMENTS



## Sport-Tek® Ladies Rival Tech Fleece Full-Zip Hooded Jacket. LST295

### PRODUCT MEASUREMENTS

	XS	S	M	L	XL	XXL	3XL	4XL
Size	2	4/6	8/10	12/14	16/18	20/22	24/26	28/30
Bust	18 1/2	19 1/2	20 1/2	22	23 1/2	25	27	29
Body Length at Back	26	26 1/2	27	27 1/2	28	28 1/2	29	29 1/2
Sleeve Length from Center Back	32	32 1/2	33	33 5/8	34 1/4	34 7/8	35 1/4	35 5/8

**Bust:** Measured across the chest one inch below armhole when laid flat.

**Body Length at Back:** Measured from high point shoulder to finished hem at back.

**Sleeve Length from Center Back:** Measure from Center Back neck to shoulder point to sleeve hem.

### SIZE CHARTS

	XS	S	M	L	XL	XXL	3XL	4XL
Size	2	4/6	8/10	12/14	16/18	20/22	24/26	28/30
Bust	32-34	35-36	37-38	39-41	42-44	45-47	48-51	52-55

## SPEC SHEET + MEASUREMENTS



Sport-Tek® Ladies Rival Tech Fleece Full-Zip Hooded Jacket. LST295

### HOW TO MEASURE

---



#### **BUST**

Measure under the arm and around the fullest part of the bust with arms down, keeping tape horizontal.