

SPEC SHEET + MEASUREMENTS

SPORT-TEK

Sport-Tek® Women's Sport-Wick® Stretch Reflective Heather 1/2-Zip Pullover. LST855

Product photo



With its allover reflective heather print, this moisture-wicking pullover is subtle during the day and a standout at night. Plus, it stretches for easy mobility.

- 6.8-ounce, 90/10 poly/spandex jersey
- Soft-brushed backing
- Tag-free label
- Cadet collar
- Princess seams
- Reverse coil zipper with clear zipper pull
- Set-in sleeves
- Thumbholes to keep hands warm
- Open cuffs and hem
- Drop tail hem

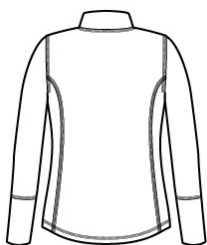
CARE INSTRUCTIONS

Machine wash cold with like colors. Only non-chlorine bleach. When needed tumble dry low, remove promptly. Cool iron if needed. Do not use softener. Do not dry clean.

Sketches



front



back

SPEC SHEET + MEASUREMENTS



Sport-Tek® Women's Sport-Wick® Stretch Reflective Heather 1/2-Zip Pullover. LST855

PRODUCT MEASUREMENTS

	XS	S	M	L	XL	XXL	3XL	4XL
Size	2	4/6	8/10	12/14	16/18	20/22	24/26	28/30
Body Length at Front	28 1/4	28 3/4	29 1/4	29 3/4	30 1/4	30 3/4	31 1/4	31 3/4
Bust	17 1/4	18 1/4	19 1/4	20 3/4	22 1/4	23 3/4	25 3/4	27 3/4
Sleeve Length	32 1/2	33	33 1/2	34 1/8	34 3/4	35 3/8	35 3/4	36 1/8

Body Length at Front: Measure from high point shoulder to lowest point of hem at front.

Bust: Measured across the chest one inch below armhole when laid flat.

Sleeve Length: Start at center of neck and measure down shoulder, down sleeve to hem.

SIZE CHARTS

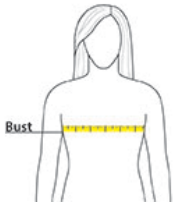
	XS	S	M	L	XL	XXL	3XL	4XL
Size	2	4/6	8/10	12/14	16/18	20/22	24/26	28/30
Bust	32-34	35-36	37-38	39-41	42-44	45-47	48-51	52-55

SPEC SHEET + MEASUREMENTS



Sport-Tek® Women's Sport-Wick® Stretch Reflective
Heather 1/2-Zip Pullover. LST855

HOW TO MEASURE



BUST

Measure under the arm and
around the fullest part of the bust
with arms down, keeping tape
horizontal.