

SPEC SHEET + MEASUREMENTS

SPORT-TEK

Sport-Tek® Women's Colorblock Soft Shell Jacket. LST970

Product photo



Outfit the team—or those in the stands—in this jacket that's wind-resistant and water-repellent. It features a sleek colorblock shell with a warm microfleece interior.

- 100% polyester woven shell bonded to a water-resistant laminated film insert and a 100% polyester microfleece lining
- 1000MM fabric waterproof rating
- 1000G/M² fabric breathability rating
- Tag-free label
- Zip-through cadet collar
- Reverse coil zipper
- Front zippered pockets
- Open hem

Please note: This product is transitioning from woven labels to tag-free labels. Your order may contain a combination of both labels.

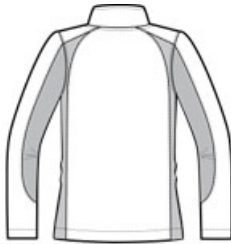
CARE INSTRUCTIONS

Machine wash cold with like colors. Only non-chlorine bleach when needed. Tumble dry medium. Cool iron if necessary.

Sketches



front



back

SPEC SHEET + MEASUREMENTS



Sport-Tek® Women's Colorblock Soft Shell Jacket. LST970

PRODUCT MEASUREMENTS

	XS	S	M	L	XL	XXL	3XL	4XL
Bust	18 1/2	19 1/2	20 1/2	22	23 1/2	25	27	29
Sleeve Length	31 1/2	32	32 1/2	33 1/4	34	34 3/4	35 1/4	35 3/4
Body Length at Back	25	25 1/2	26	27	28	29	29 1/2	30

Bust: Measured across the chest one inch below armhole when laid flat.

Sleeve Length: Start at center of neck and measure down shoulder, down sleeve to hem.

Body Length at Back: Measured from high point shoulder to finished hem at back.

SIZE CHARTS

	XS	S	M	L	XL	XXL	3XL	4XL
Size	2	4/6	8/10	12/14	16/18	20/22	24/26	28/30
Bust	32-34	35-36	37-38	39-41	42-44	45-47	48-51	52-55

SPEC SHEET + MEASUREMENTS



Sport-Tek® Women's Colorblock Soft Shell Jacket.
LST970

HOW TO MEASURE



BUST

Measure under the arm and around the fullest part of the bust with arms down, keeping tape horizontal.