

## SPEC SHEET + MEASUREMENTS

**PORT&CO.**

Port & Company<sup>®</sup> Youth Core Blend 3/4-Sleeve Raglan Tee. PC55YRS

### Product photo



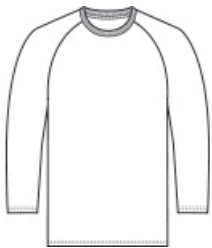
A classic, moisture-wicking team look at a great value.

- 5.5-ounce, 50/50 cotton/poly
- Made with up to 5% recycled polyester from plastic bottles
- Removable tag for comfort and relabeling
- Rib knit collar
- Back neck tape

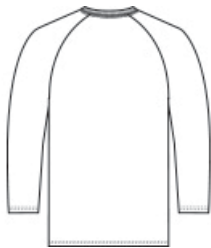
### CARE INSTRUCTIONS

Machine wash cold inside out with like colors. Only non-chlorine bleach when needed. Tumble dry medium. Do not iron.

### Sketches



front



back

# SPEC SHEET + MEASUREMENTS

**PORT&CO.**

Port & Company<sup>®</sup> Youth Core Blend 3/4-Sleeve Raglan Tee. PC55YRS

## PRODUCT MEASUREMENTS

	XS	S	M	L	XL
Size	4	6/8	10/12	14/16	18/20
Chest	14	15 1/2	17	18	19 1/2
Body Length at Back	19	21	23	25	27
Sleeve Length	16 3/4	19 3/8	21 1/4	23 1/8	25 3/4

- Chest:** Measured across the chest one inch below armhole when laid flat.
- Body Length at Back:** Measured from high point shoulder to finished hem at back.
- Sleeve Length:** Start at center of neck and measure down shoulder, down sleeve to hem.

## SIZE CHARTS

	XS	S	M	L	XL
Size	4	6/8	10/12	14/16	18/20
Chest	25-26	26-28	28-30	30-32	32-35

# SPEC SHEET + MEASUREMENTS

**PORT&CO.**

Port & Company<sup>®</sup> Youth Core Blend 3/4-Sleeve Raglan  
Tee. PC55YRS

## HOW TO MEASURE

---



### CHEST

Measure under the arm and  
around the fullest part of the chest  
with arms down, keeping tape  
horizontal.